



---

## Dundas BI

### Governed Data Discovery Profile

---

By Wayne W. Eckerson



This is a product profile associated with an [Eckerson Group](#) report titled [“Governed Data Discovery: Balancing Flexibility and Standards”](#) that appeared on February 28, 2016.

### Abstract

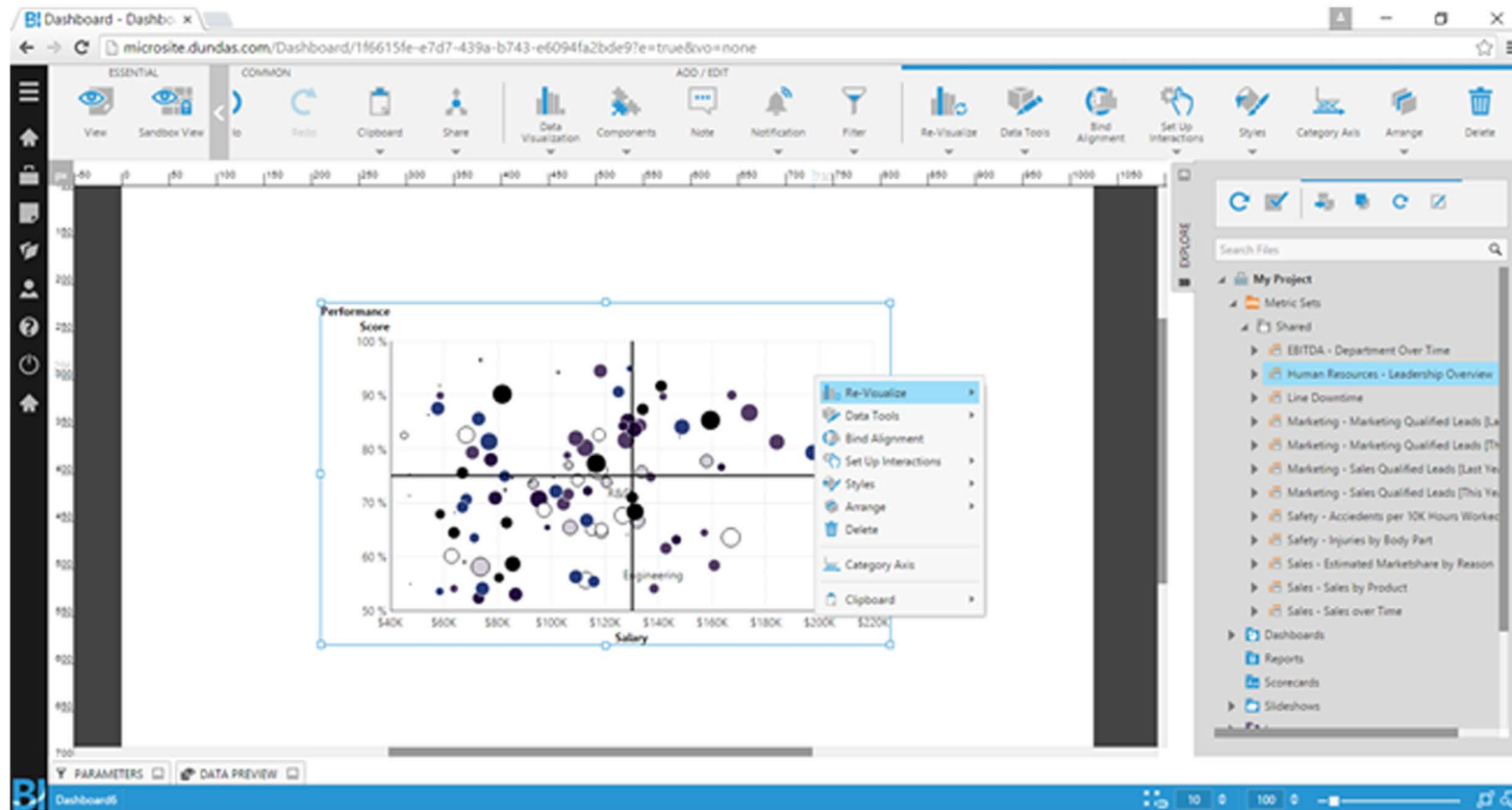
*Dundas has evolved from a provider of charting components to a dashboard software provider to most recently, a modern BI platform with a full range of reporting, dashboarding, and data discovery functionality. Besides offering a modern Web-only and mobile-ready data delivery environment, Dundas BI provides a rich governed discovery environment tailored to three classes of users: standard users, power users, and developers. Each class of user gains additional self-service functionality managed by a local administrator. Given its dashboard heritage, Dundas builds discovery into its dashboard design environment, merging distinct functionality in other BI tools.*

In 2014, Dundas completed its transition from a vendor of charting components and dashboard software to a full-blown, modern BI platform. Designed from the ground up for Web and mobile computing, Dundas BI provides a single, highly visual, and interactive BI environment that blends data from SQL and OLAP data sources and data files.

The .NET and HTML5 platform provides integrated support for reports, dashboards, scorecards, data discovery, and analytics (via a built-in calculation engine and integration with R scripts) and offers a rich set of APIs for easy embedding into other applications. Unique among BI vendors, Dundas BI’s discovery tool doubles as its dashboard design environment, merging steps that exist as discrete functions or modules in other BI tools.

Most importantly, Dundas BI provides a governed self-service environment tailored to different types of users. “Standard users” can view and interact with existing reports, dashboards, and scorecards, create their own custom views from scratch or by cloning an existing view, and share them via built-in slideshows. These users can drag and drop metrics from a global shared folder or custom project to create unique dashboard views. (See figure 1.) Their views are automatically saved in a personal folder (“My Project”) in the Dundas BI portal from which they can share them with others, if they have permission.

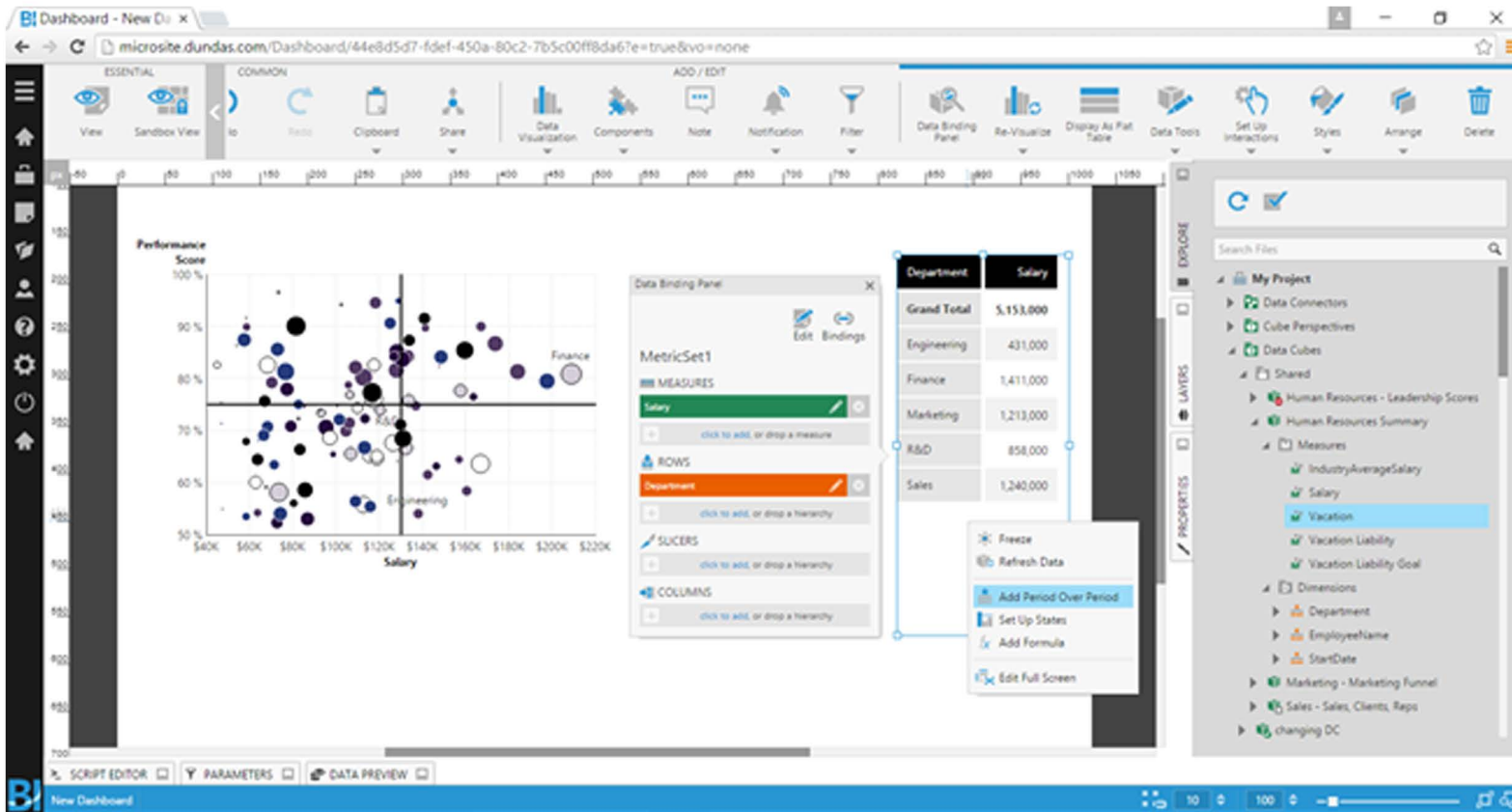
Figure 1. Defining a Custom View in Dundas BI



*Dundas BI enables “standard” or casual users to customize existing reports and dashboards or create new ones by dragging and dropping components from a global data model.*

Dundas BI goes a step further with power users, granting them more self-service functionality than standard users. For example, power users can drag and drop measures and dimensions from existing data models (See figure 2.) or directly from database fields not exposed in a specific data model. Alternatively, they can drop Excel files onto the canvas and merge it with existing data to create new metrics, dimensions, tables, and hierarchies. Finally, power users can use a formula engine with conditional logic to create custom calculations from existing metrics, including period-over-period comparisons.

Figure 2. Creating New Visualizations in Dundas BI

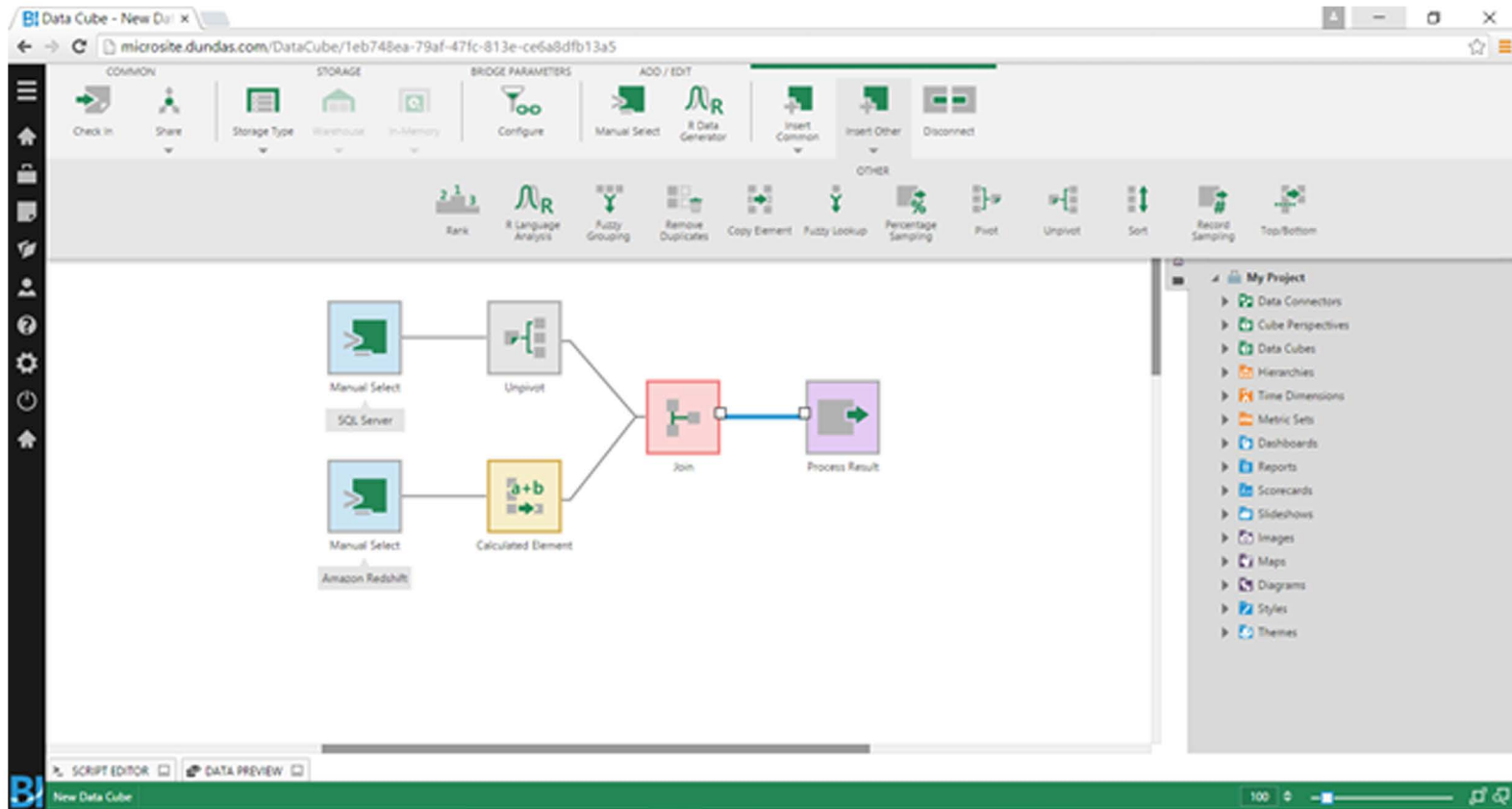


*Dundas BI combines discovery and dashboard development in a single environment, expediting the process of generating insights and sharing views.*

Besides standard and power users, Dundas also reserves special functionality for developers in the IT department or elsewhere. With Dundas BI, developers can create new data models using a cube design tool (See figure 3.) and build advanced interactions using Javascript. Finally, Dundas BI gives developers multiple options to optimize dashboard query performance. Developers can configure Dundas BI to generate new cubes dynamically from source systems at run time. Or if performance is an issue, they can persist cubes in a local SQL Server database or cache them in memory for optimal performance.



Figure 3. Creating a New Data Model in Dundas BI



*Dundas BI combines discovery and dashboard development in a single environment, expediting the process of generating insights and sharing views.*

**Conclusion.** A relative newcomer to BI, Dundas has quickly become a popular choice among organizations that seek a modern BI platform with strong visualization and dashboard capabilities, along with complementary reporting and discovery functionality to satisfy the full range of users at more organizations.



**Wayne W. Eckerson** is an internationally recognized thought leader in the business intelligence and analytics field who thinks critically, writes clearly, and presents persuasively about complex topics. He is a sought-after consultant, noted speaker, and bestselling author. He can be reached at [wayne@eckerson.com](mailto:wayne@eckerson.com).



Need help with your business analytics or data management and governance strategy?

Want to learn about the latest business analytics and big data tools and trends?

Check out **Eckerson Group** research and consulting services

